

**Fiscal Year 2010  
Annual Report**

# HAWAII LEARNING RESOURCE

THE DBA OF NORTH HAWAII WOMEN AND CHILDREN'S SERVICES



*Building Skills*

*Cultivating Minds*

*Transforming Lives*

## **Mission Statement**

*To empower all kinds of  
learners through partnerships  
that bring advances in  
teaching and learning to our  
community.*



## **Our New Name and Logo Hawaii Learning Resource**

In Fiscal Year 2010, the Board of Directors and staff approved a new name for the organization which we feel more accurately reflects our mission, vision, and values. We look forward to continuing to expand our programs and partner with the community to provide quality programs to all learners on the Big Island. Special thanks to **Sig Zane Design Team, Sig Zane and Kuha'o Zane**, for the creation of our logo.

### **Mission**

*To empower all kinds of learners through partnerships that bring advances in teaching and learning to our community.*

### **Vision**

*We envision a community which embraces and empowers all learners to thrive in school and in life.*

### **We value....**

*The unique strengths and abilities of all kinds of learners;  
Families and educators who believe in and support all learners;  
The opportunity to transform students' lives through effective  
teaching and learning;  
Our partners who are committed to and invest in better  
educational opportunities for all learners.*

### **Photo Acknowledgments**

Photos on pages 3, 4 and 8 by Leslie Maus from Assets School; all other photos by Hawaii Learning Resource staff.

*Our Annual report was produced entirely in-house by our staff  
and volunteer board members with technical assistance provided from the  
Doris & Earl Bakken Foundation.*

## From Our Board

Dear Supporters,

Your support has enabled ***Hawaii Learning Resource*** (formerly Hawaii Resources for School Success) to help struggling and gifted students in our community. Your support has helped to build students' skills, parent's skills, and teacher's skills. Your support has indeed helped to transform lives in 2010 and beyond. The students who have been touched by our programs, as well as their parents, are deeply grateful and so are we. The achievements of ***Hawaii Learning Resource*** in Fiscal Year 2010 would not have been possible without your support.

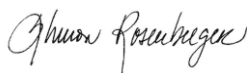
Accomplishments in Fiscal Year 2010 include completion of the three-year partnership with Kohala Elementary School resulting in nearly all the teachers and key staff receiving training in the *All Kinds of Minds* model. The **Independent Evaluation** was completed and determined that the *Schools Attuned* program is now successfully integrated into daily practice at the school. We are confident, based on the Independent Evaluation, that the Kohala teachers have acquired the skills to help *all kinds of learners* at Kohala Elementary for years to come. This partnership has been so successful that Kohala Elementary School was recognized by the *All Kinds of Minds Institute* as a ***School of Distinction*** and was one of only ten schools nationally to receive this distinction.

In Fiscal Year 2010, ***Hawaii Learning Resource*** provided \$11,740 in direct and indirect financial assistance to 6 of the 9 students for individualized in-depth assessments. Those students and their families received invaluable insight that took the mystery out of why the student excelled in some areas and struggled in others. The learning profiles developed from those assessments allowed the students, parents, and their schools to better understand each students' unique learning patterns and implement specific strategies to improve their skills, confidence, and satisfaction with school. For many of these students the assessment did indeed *transform their lives*.

With the remarkably generous direct donations received at our January 2010 event, we were able to provide **two Academic Enrichment Camps** each two weeks long for a total of 30 community students. The camps were held in partnership with Honolulu based *Assets School*, which provides innovative teaching practices and has proven student success with gifted and dyslexic students. Based on the positive feedback from parents, teachers, and partners, we plan to hold the camp again in summer 2011.

***Hawaii Learning Resource*** is committed to providing the right help at the right time to struggling and gifted students, their families, and local educators by offering a strengths-based model to address learning challenges. We are equally committed to making these programs accessible to the community by providing affordable programs to participants who would otherwise be unable to pay. Only through donor and grant support will this be possible. It is our hope that you will continue to help local students in 2011 to build their skills and transform their lives.

We deeply appreciate your support and look forward to a productive 2011.



Sherron Rosenberger  
Board President



Sharon Vitousek, M.D.  
Board Vice-President



Lynn White  
Board Member

# Mahalo to Our Generous Donors



## Individual Donors

Samuel and Laurie Ainslie  
Gerald and Karen Akers  
John and Ann Alkire  
Guy and Sally Armstrong  
Lonnie Autry  
Earl and Doris Bakken  
Tim Barrett  
Marc and Lynn Benioff  
Gigi Brisson  
Maggie Eastwood  
Steve and Carollane Falcinella  
Irwin and Seppie Federman  
Robert Friedman  
George Fry  
Pauline Fry  
Richard Green  
Robby and Marty Hind  
Susan Hunt  
Kristina Kiehl  
Gordy and Karen Kirkland  
Sandra Kurtzig  
Stephanie Ladwig  
James and Lynn Lally  
Dale and Lynda Laurance

Donald and Sally Lucas  
Wendy McCaw  
Greg and Vicki McManus  
Bruce and Nancy Meyer  
Robert and Carol Momsen  
Jim Ed and Kim Norman  
Patricia O'Kieffe  
Penny O'Toole  
Carl and Mary Jane Panattoni  
Alan and Toni Pinn  
Mike Prohoroff  
Jeff and Patti Reimer  
Laurie Jo Rogers  
Sherron Rosenberger  
Gordon Russell  
Ken Siebel  
Barry and Edie Snowbarger  
Toni Stylos  
Mary Vandamme  
Randy and Sharon Vitousek  
William and Lynn White  
David and Valarie Whiting  
Neil and Pegi Young  
George and Lorri Zimmer

*"By involving my students in the process... I can help them discover more about their own unique learning profiles. This will help me to be able to reach them and teach them more effectively."*

-Teacher who attended the *Teaching All Kinds of Minds* training

## Mahalo to Our Generous Donors



### Grants

Atherton Family Foundation  
Gordon Russell Fund  
Hawaii Hotel Industry Foundation  
John M. Simpson Foundation  
Kuki'o Community Fund

### In-Kind Donors

All Kinds of Minds  
Yvonne Cheng  
Costco, Kailua-Kona  
Hawaii Preparatory Academy  
Thea Johnston  
Ski Kwiatkowski  
Mary Morelli  
Mrs. Barry's Cookies  
Paradise Gourmet Catering  
Starbucks Coffee Hawaii, Waimea  
Winifred Sullivan, Honuiala'i  
Jay Warner  
Waikoloa Village Market  
William and Lynn White  
Sig Zane Design Team, Sig Zane and Kuha'o Zane

*"Today I learned about a way of looking at the differences that allows the observer to not only identify individual strengths and weaknesses, but also serves as a valuable tool for lesson development and evaluation."*

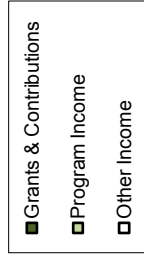
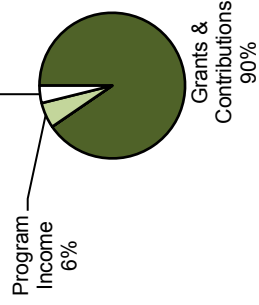
-Teacher who attended the *Teaching All Kinds of Minds* training

# Hawaii Learning Resource

## Fiscal Year 2010 Financial Summary

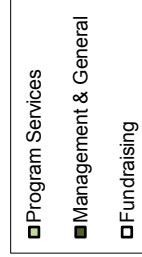
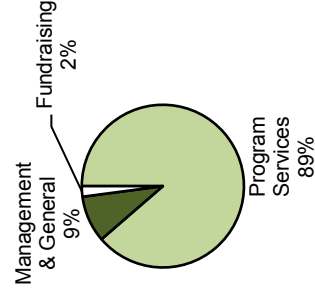
Unrestricted Funds    Restricted Funds    FY 10 Total    Fiscal Year 2010 Total Revenue & Support \$301,835

Grants and Contributions	42,755	87,506	130,261
Other Income	137,276		137,276
Program Income	13,930		13,930
In-Kind Donations	16268	4,100	20,368
<b>TOTAL REVENUE AND SUPPORT</b>	<b>210,229</b>	<b>91,606</b>	<b>301,835</b>



<b>EXPENSES</b>			
Program Services			
Model School Program	56,922	49,780	106,702
Student Assessment Program	57,091	6,600	63,691
Academic Enrichment Program	23,915	35,226	59,141
Total Program Services	137,928	91,606	229,534
Supporting Services			
General and Administrative	37,836		37,836
Fundraising	79,436		79,436
Total Supporting Services	117,272	0	117,272
<b>TOTAL EXPENSES</b>	<b>255,200</b>	<b>91,606</b>	<b>346,806</b>

Fiscal Year 2010 Total Expenses \$346,806



NET ASSETS, BEGINNING OF YEAR

NET ASSETS, END OF YEAR

\*Fiscal Year 7/1/09 to 6/30/10

## Partnering with Students



### The Student Assessment Program

The Student Assessment Program provides in-depth student assessments for capable, struggling and gifted students in grades 1 through 8 in both public and private schools in North Hawaii. A multidisciplinary contracted team uses a strengths-based approach to assess and guide struggling students, their families, and their teachers. The assessment uncovers the student's strengths, interests and specific learning challenges and generates an individualized Learning Plan with specific and practical strategies to use at home and at school.

### Fiscal Year 2010 Accomplishments

- Provided 5 students and families with in-depth multi-disciplinary student assessments and demystification meetings to assure student and family understanding.
- Provided 4 prioritized assessments to address specific academic concerns.
- Provided \$11,740 in direct financial assistance for assessments.
- Provided all families of previously assessed students with follow-up support as requested and provided 9 students and families with formal three-month follow-up.

*"For years we have been struggling to understand how to work with our son. After his assessment we now see common threads that run through his problem areas... We now have tools to help strengthen his areas of challenge as well as ideas on how to encourage him to use his strengths to support those weaker areas."*

-Parent of an Assessment Student

## Partnering with Schools



### Teacher Professional Development Program

#### Our Partnership with Kohala Elementary School

In May of 2010, Hawaii Learning Resource completed the three year partnership with Kohala Elementary School. The partnership resulted in nearly all Kohala Elementary School teachers and key staff receiving *All Kinds of Minds* developed *Schools Attuned* training and mentoring from Hawaii Learning Resource. In 2009, Kohala Elementary School was recognized as a **Schools Attuned School of Distinction** by the *All Kinds of Minds Institute*, one of only ten schools nationally to receive this distinction indicating the *Schools Attuned* program is now successfully integrated into daily practice at the **school**.

*"In 2008 Kohala began working with [Hawaii Learning Resource and] All Kinds of Minds to address faculty concerns over the varied learning abilities they were encountering in their classrooms, and their inability to teach effectively to those different learning styles. Today nearly 70 percent of the school's educators have completed an All Kinds of Minds course, and are using their new knowledge to better understand each student's learning profile of strengths and weaknesses and to find ways to incorporate students' affinities into their daily assignments. By implementing the All Kinds of Minds philosophy and processes into all aspects of Kohala's school life, the faculty is working to make sure that teachers, students and parents all have a common language and framework for understanding what academic success looks like."*

*From the All Kinds of Minds Website*



## Our Partnership with Assets School

In light of current funding cuts in the Hawaii State Department of Education, including furlough days which made the Hawaii school year one of the shortest in the nation, Hawaii Learning Resource sought to help students make up for lost learning opportunities. In June 2010, Hawaii Learning Resource offered the first of two pilot Summer Academic Enrichment Camps, held in partnership with Assets School from Oahu, and targeting struggling and gifted students entering grades 2 to 5. The two week camps were held at the Hawaii Preparatory Academy Village Campus.

The Summer Academic Enrichment Camps provided thirty students with an exciting, hands-on learning experience designed to inspire joy in learning and an opportunity to significantly improve their learning and social skills, as well as gain a better understanding of their own learning strengths and interests. Three local teachers were trained in how to implement a strengths-based curriculum for all kinds of learners. Hawaii Learning Resource received direct donations which enabled us to offer the camp at a significantly reduced cost to the community making the camp accessible to families who would otherwise not have been able to afford the camp fee.

Based on feedback from participants, the Academic Enrichment Camps were successful in providing students and their families with a positive learning experience. Plans are underway to offer the Academic Enrichment Camps in summer 2011, again in partnership with Assets School.

*"These two weeks have helped my son feel comfortable socially and emotionally and helped him work on areas of his life he struggles with. Thank you for making a difference in my child's life this summer."*

- Parent of a Summer Academic Enrichment Camp Student



## Partnering with Families



## Community Education Workshops

During the summer Academic Enrichment Camp sessions, four Parent Information Nights were held in collaboration with Assets School. Topics included *How Parents Can Improve Their Child's Reading*, and *How Parents Can Help Students Underperforming in School*. Information sessions were free of charge and attended by parents of camp students as well as by parents in the community.

## Fiscal Year 2010 Accomplishments

- Presented four Parent Information Nights.
- Presented a Hawaii Learning Resource Program Information Night at Tutu's House in Waimea.
- Provided links to national resources for parents and students on our website, [www.hawaiilearningresource.org](http://www.hawaiilearningresource.org) and Facebook page.



## Looking Forward

The success of our pilot summer Academic Enrichment Camps will guide our program plans for Fiscal Year 2011. Through the summer camps, we will benefit all three target audiences of our past programs: **students, teachers, and parents**. The Academic Enrichment Camps directly support diverse learners and their families in the community, and continue to increase local teacher capacity to more effectively help *all kinds of learners*. With the continued commitment of our partners and our donors, we plan to offer the camp in summer 2011. Also in Fiscal Year 2011, we will continue to find ways to reduce our administrative expenses and determine how we can best meet the needs of the community by conducting a Community Resources/Needs Assessment which will guide us on how best to partner to accomplish our mission as well as how best to leverage our existing programs for greater impact.

## Fiscal Year 2011

### Student Assessment Program

- Improve student and family follow-up to more clearly understand and assure impact.
- Offer scholarships, as funds permit, for in-depth and prioritized assessments.

### Teacher Professional Development

- Train and mentor additional local teachers in using a strengths-based curriculum to help all kinds of learners, utilizing an apprentice-type model through our Summer Academic Enrichment Camps.

### Student Academic Enrichment

- Offer two week Academic Enrichment Camps in summer 2011 for 40 students entering grades 2 to 8.
- Provide weekly parent-teacher conferences during the camps.
- Provide each family with an outline of their child's learning strengths and challenges with resources and strategies to help.

### Parent Education

- Conduct at least seven Parent Information Sessions to assist parents in understanding their child's learning challenges and how to better work with their child to improve the learning process.



# Hawaii Learning Resource

## 2010 Board of Directors

Sherron E. Rosenberger, President  
Sharon Vitousek, M.D., Vice-President  
Stephanie Ladwig, Treasurer  
Laurie Jo Rogers, Secretary  
Thea Johnston  
Rebecca Keliihoomalu, R(B),  
Lynn White

## Advisory Board

Laurie Ainslie  
Gigi Brisson  
Stephen and Traci Green  
Susan Hunt  
Rich Matsuda  
Jeff and Patti Reimer  
Ken Russell  
Barry Snowbarger  
Judy Stevenson  
William White  
Pegi Young

## Administrative Staff

Toni Stylos, Acting Executive Director

**Hawaii Learning Resource**  
**65-1229A Opelo Road, Hana Hou Cottage Suite 6, Kamuela, Hawaii 96743**  
**(808) 885-9318**  
**[www.hawaiilearningresource.org](http://www.hawaiilearningresource.org)**

*Tax-deductible donations may be made payable to Hawaii Learning Resource 501(c)(3)*